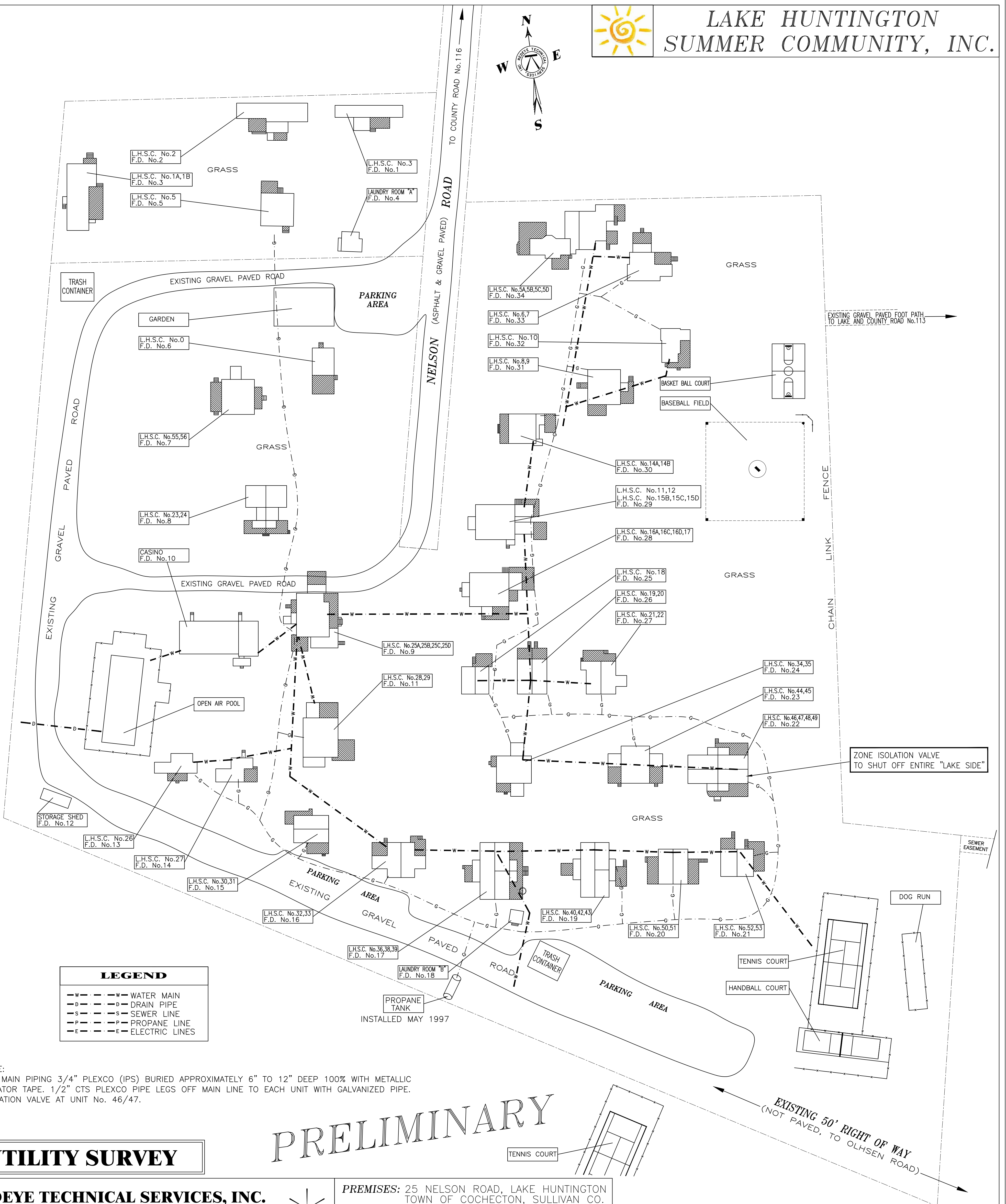
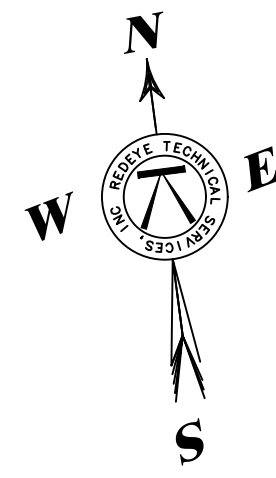




LAKE HUNTINGTON SUMMER COMMUNITY, INC.



LEGEND	
—w—	WATER MAIN
—d—	DRAIN PIPE
—s—	SEWER LINE
—p—	PROPANE LINE
—e—	ELECTRIC LINES

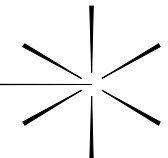
NOTE:
ALL MAIN PIPING 3/4" PLEXCO (IPS) BURIED APPROXIMATELY 6" TO 12" DEEP 100% WITH METALLIC LOCATOR TAPE. 1/2" CTS PLEXCO PIPE LEGS OFF MAIN LINE TO EACH UNIT WITH GALVANIZED PIPE. ISOLATION VALVE AT UNIT No. 46/47.

PRELIMINARY

UTILITY SURVEY

REDEYE TECHNICAL SERVICES, INC.

711 FIFTH AVENUE, BROOKLYN, NEW YORK
718-832-2432 / 718-832-1666 FAX



PREMISES: 25 NELSON ROAD, LAKE HUNTINGTON
TOWN OF COCHECTON, SULLIVAN CO.

STATE OF: NEW YORK, 12752

PREPARED: APRIL 2022